



BIG

Broadcasting Interest Enterprise, Inc.



BIG

Broadcasting Interest Enterprise, Inc.



BIG

Broadcasting Interest Enterprise, Inc.



BIG

Broadcasting Interest Enterprise, Inc.



BIG

Broadcasting Interest Enterprise, Inc.



BIG

Broadcasting Interest Enterprise, Inc.

Broadcasting Interest Enterprise, Inc. presents

Advertisement & Sponsorship Opportunities

for

“Social Networking with C. Henry Adams & The Krewe”

Talk Radio Show 2010-2011

© 2010 Broadcasting Interest Enterprise, Inc.



BIG

Broadcasting Interest Enterprise, Inc.



BIG

Broadcasting Interest Enterprise, Inc.



BIG

Broadcasting Interest Enterprise, Inc.



BIG



BIG



BIG



WWW.BIEMEDIAGROUP.COM
(404) 348 - 8319



April, 2010

Broadcasting Interest Enterprise, Inc.

**Broadcasting Interest Enterprise, Inc. presents
'Social Networking with C. Henry Adams & The Krewe'**

Table of Content

The Program Summary of 'Social Networking with C. Henry Adams & the Krewe'	Page 3
Biography of C. Henry Adams	Page 4
Advertisement and Sponsorships of 'Social Networking with C. Henry Adams & the Krewe'	Page 5
Figure 1: Advertisement and Sponsorships of 'Social Networking with C. Henry Adams & the Krewe'	Page 6
Figure 2: Advertisement and Sponsorships of 'Social Networking with C. Henry Adams & the Krewe'	Page 7
Contact Information	Page 8
A Letter from KFNB 1100 AM Phoenix, Arizona	Page 9

Confidentiality Disclosure: Treasury Department Circular 230 Disclosure: To ensure compliance with requirements imposed by the Treasury Department, we inform you that any U.S. federal tax advice contained in this communication (including any attachments) is not intended or written to be used, and cannot be used, for the purpose of (i) avoiding penalties under the Internal Revenue Code or (ii) promoting, marketing or recommending to another party any transaction or matter addressed herein. Furthermore, Broadcasting Interest Enterprise, Inc. reserves the right to state that all spoken information, written data or electronic transmitted knowledge in text form is secret and only intended for the recipient or group addressed. If you are not the party authorized to receive this information it is immediately advised that you cease and assist. Options: (1) Destroy, delete and dismember all copies. (2) Return all copies of this document to Broadcasting Interest Enterprise, Inc. All information in this document is considered intellectual property of Broadcasting Interest Enterprise, Inc and is not authorize for public usage.



WWW.BIEMEDIAGROUP.COM
(404) 348 - 8319



Broadcasting Interest Enterprise, Inc.

April, 2010

Broadcasting Interest Enterprise, Inc. presents The Program Summary of 'Social Networking with C. Henry Adams & The Krewe'

The 'Social Networking' Talk Radio Show was copyright, produced and distributed by Broadcasting Interest Enterprise, Inc. in association with KFNX 'NEWS-TALK RADIO' 1100 AM of Phoenix, Arizona.

This Talk Radio Show is an emerging syndicated broadcast of Broadcasting Interest Enterprise, Inc. featuring its President & CEO – C. Henry Adams. The Show will discuss business development, advancements in Information Technology and Telecommunications as they relate to Social Media.

The initial Headquarters of this particular show is Phoenix, Arizona at KFNX 'NEWS-TALK RADIO' 1100 AM. However, the show shall broadcast out of studios in Atlanta, Georgia via Satellite Transmission.

This Show is expected to adhere to the same code of ethics and practices that apply to programs produced and distributed by KFNX 'NEWS-TALK RADIO' 1100.

The 'Social Networking' Talk Radio Show will tackle discussions and interviews with Key Professionals related to the advancements of information technology and telecommunications in 'LAYMAN TERMS'. Its objective is to become a WORLDWIDE Distributor of making sense to this new language called 'IT'.

This show is not based on politics, religion or particularly one's values, but it will be presented by a Moderate Conservative who will inspire New Internet Users to become aware of advance technology while not hiding the Host southern bred views; this add spice to the flavor of the event. The Host is **C. Henry Adams**.

'**The Krewe**' of this show will consist of two females and one additional male announcer. Each Individual is educated and considered an Internet Savvy person of his or her own rights. Their identities will be announced at a later date. However, their views of discussions and or opinion regarding related topics will often vary, but all will have similar understanding of the usage of modern technologies.

This unique Talk Radio Show will also include Commentary and limited New Music of Artist of various types to segment the broadcast. Hailing from KFNX 'NEWS-TALK RADIO' for one hour through the Radio AM Airwaves, it will stream "Live" on the Internet for three hours from 10:00 AM to 1:00 PM Tuesdays & Thursdays utilizing various web sites including its own Web site operated and owned by Broadcasting Interest Enterprise, Inc.

The show will expand to Podcast, You Tube video segments, Digital TV, Cable TV, FM & Satellite Radio Broadcast.

For more information regarding 'Social Networking with C. Henry Adams and the Krewe', please feel free to contact BIE's office at (404) 348-8319.

Confidentiality Disclosure: Treasury Department Circular 230 Disclosure: To ensure compliance with requirements imposed by the Treasury Department, we inform you that any U.S. federal tax advice contained in this communication (including any attachments) is not intended or written to be used, and cannot be used, for the purpose of (i) avoiding penalties under the Internal Revenue Code or (ii) promoting, marketing or recommending to another party any transaction or matter addressed herein. Furthermore, Broadcasting Interest Enterprise, Inc. reserves the right to state that all spoken information, written data or electronic transmitted knowledge in text form is secret and only intended for the recipient or group addressed. If you are not the party authorized to receive this information it is immediately advised that you cease and assist. Options: (1) Destroy, delete and dismember all copies. (2) Return all copies of this document to Broadcasting Interest Enterprise, Inc. All information in this document is considered intellectual property of Broadcasting Interest Enterprise, Inc and is not authorize for public usage.



WWW.BIEMEDIAGROUP.COM
(404) 348 - 8319



Broadcasting Interest Enterprise, Inc.

April, 2010

A Brief Biography of C. Henry Adams

C. Henry Adams started his career in the field of Telecommunications 21 years ago while attending Fisk University in Nashville, Tn. C. Henry discovered his niche in relations to telecommunications when he excelled from a Music Room Clerk to a Student Radio Program Director at WFSK 88.1 FM.

In 1996, while serving as an USMC Reservist, he worked at GC Technologies testing and creating single mode fiber optical couplers. In 1998, C. Henry Adams founded Broadcasting Interest Enterprise, Inc. ("BIE") - a business development and telecommunications consulting firm.

Today, C. Henry Adams blogs about business development and advancements in the field of Information Technology while maintaining his organization. He is popular on Facebook, LinkedIn & Twitter, as well as, (9) nine other social networks where he claims to have self-syndicated his name as a Brand for his company.

With the development of RSS (Really Simple Syndication) and the Open Source Software Initiative, the Internet has increased in Users from the ages of 35 to 65 in just a short period of 2 years. C. Henry Adams & BIE, Inc. have successfully reached thousands of these Internet Users as time progressed.

C. Henry Adams is a professional whose vernacular is not short of Southern American Dialect, but his unique often amusing approach to providing an explanation regarding the workings of various technologies is very educational. He is a brilliant rarity to say the least.

If you think you heard it all about this Gentleman, then rest assured that if you Google ' C. Henry Adams & BIE ' you will be surprised and delighted to find much more information about a young stunning man with a unique plan.

Sincerely,

A handwritten signature in black ink, appearing to read "C. Henry Adams". The signature is stylized and cursive.

C. Henry Adams
President / CEO
Broadcasting Interest Enterprise, Inc.
(404) 348-8319
chatlga2000@yahoo.com

For more information regarding C. Henry Adams, please feel free to contact his office at (404) 348-8319.

Confidentiality Disclosure: Treasury Department Circular 230 Disclosure: To ensure compliance with requirements imposed by the Treasury Department, we inform you that any U.S. federal tax advice contained in this communication (including any attachments) is not intended or written to be used, and cannot be used, for the purpose of (i) avoiding penalties under the Internal Revenue Code or (ii) promoting, marketing or recommending to another party any transaction or matter addressed herein. Furthermore, Broadcasting Interest Enterprise, Inc. reserves the right to state that all spoken information, written data or electronic transmitted knowledge in text form is secret and only intended for the recipient or group addressed. If you are not the party authorized to receive this information it is immediately advised that you cease and assist. Options: (1) Destroy, delete and dismember all copies. (2) Return all copies of this document to Broadcasting Interest Enterprise, Inc. All information in this document is considered intellectual property of Broadcasting Interest Enterprise, Inc and is not authorize for public usage.



WWW.BIEMEDIAGROUP.COM
(404) 348 - 8319



Broadcasting Interest Enterprise, Inc.

April, 2010

Advertisement & Sponsorships of 'Social Networking with C. Henry Adams & The Krewe'

Broadcasting Interest Enterprise, Inc. ("BIE") is seeking an Annual Sponsor for 'Social Networking with C. Henry Adams & the Krewe' who relates to the Information Technology and Telecommunications Industries in a multifaceted manner and not afraid to step out of the box.

This organization whether Local, National or Worldwide would be prepared to be projected into the stratosphere by a unique Talk Radio Show specifically design to reach individuals between the ages of 35 to 65 with an income on average between \$65,000.00 USD to \$550,000.00 USD annually. Plus, this particular Citizen listening, whose bent and determine on staying up with the trends, knowledge and education of advance Information Technology & Telecommunications will consist of small emerging business owners seeking entrepreneurial opportunities to broaden their horizons.

BIE is seeking to offer an Annual Sponsor Title Rights & recognition to the Show. An example would be - "Social Networking with C. Henry Adams & the Krewe is brought to you by **ABCD Company** and produced by BIE Media Group".

Furthermore, BIE will post visual artwork and other paraphernalia provided by the Annual Sponsor advertising in the studio, on the Internet, on You Tube and on Digital & Cable TV when video broadcast are made available. Also, visual artwork will be posted on web sites owned & operated by BIE in relationship to this particular show. Note: Any "Live" Remote Broadcast will be considered and included per contract.

Furthermore, Executives of this organization (Annual Sponsor) will be invited and interviewed on the show to share insight, wisdom, knowledge and education regarding the advancements of Information Technology, as well as, Telecommunication. If appropriate and authorized by the rules & regulations of the FCC, FTC and the partnering broadcasting stations, their products or services will be shared as well.

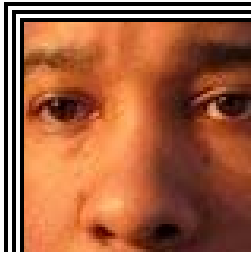
Furthermore, this Annual Sponsorship covers 105 seconds of commercial time per show promoting the aforementioned, also being recognized 16 times in one broadcast per hour the Show is on the air.

Furthermore, as the Annual Sponsor, this multi-broadcast event set to be heard eventually on AM, FM, Satellite Radio, Digital TV, Cable TV, Streaming Audio, as well as, on Podcast will be recorded for rebroadcast just to further extend out it reach to the listening audience.

It is estimated that a price proposal of \$162,000.00 USD for one 12 month-period be offered. This will in fact cover all expenses incurred by the broadcast and cover 104 shows scheduled to broadcast every Tuesday & Thursday starting from Mid April 2010 and ending in Mid March of 2011.

The show will debut originally on KFNX 'NEWS-TALK RADIO' 1100 AM in Phoenix, Arizona, where it will be headquartered, although remotely broadcasting via satellite from Studios in Atlanta, Georgia. Please see the following information regarding the initial Radio Station coming up next.

Confidentiality Disclosure: Treasury Department Circular 230 Disclosure: To ensure compliance with requirements imposed by the Treasury Department, we inform you that any U.S. federal tax advice contained in this communication (including any attachments) is not intended or written to be used, and cannot be used, for the purpose of (i) avoiding penalties under the Internal Revenue Code or (ii) promoting, marketing or recommending to another party any transaction or matter addressed herein. Furthermore, Broadcasting Interest Enterprise, Inc. reserves the right to state that all spoken information, written data or electronic transmitted knowledge in text form is secret and only intended for the recipient or group addressed. If you are not the party authorized to receive this information it is immediately advised that you cease and assist. Options: (1) Destroy, delete and dismember all copies. (2) Return all copies of this document to Broadcasting Interest Enterprise, Inc. All information in this document is considered intellectual property of Broadcasting Interest Enterprise, Inc and is not authorize for public usage.



WWW.BIEMEDIAGROUP.COM
(404) 348 - 8319



April, 2010

Broadcasting Interest Enterprise, Inc.

Advertisement & Sponsorships of ‘Social Networking with C. Henry Adams & The Krewe’

Broadcast Media	Show Sponsor	Segment Sponsor Only	Internet Sponsor Only	Radio Commercial Sponsor Only		
				:15 Seconds	:30 Seconds	:60 Seconds
AM Radio	X	X		X	X	X
Streaming Internet	X	X		X	X	X
Podcast	X			X		
Website Display Banner	X		X			
You Tube	X					

Figure 1

Broadcast Media – The column consisting of the various communications applications this show will be available for broadcast. The “X” identifies the *Broadcast Media* to which the Sponsor will be able to advertise their services or products within accordingly.

Show Sponsor – The organization sponsoring the entire broadcast. This sponsor will be recognized on all broadcast media of the show.

Segment Sponsor – The organization sponsoring the (4) four segments of the show per hour. An example of a segment might be when the show breaks for a commercial a quarter after the hour then starts a new discussion, interview or topic. Ex. “The Interview with the CEO segment was brought to you by ABC Company.”

Internet Sponsor – The organization sponsoring the Internet will have displayed banners with backlinks to their respective web sites. All banners will vary, but the cost or rate will remain constant.

Radio Commercial Sponsor or Radio Ads – the rate will vary per cost of a 15-sec., 30-sec. or 60-sec. Radio Ad.

Confidentiality Disclosure: Treasury Department Circular 230 Disclosure: To ensure compliance with requirements imposed by the Treasury Department, we inform you that any U.S. federal tax advice contained in this communication (including any attachments) is not intended or written to be used, and cannot be used, for the purpose of (i) avoiding penalties under the Internal Revenue Code or (ii) promoting, marketing or recommending to another party any transaction or matter addressed herein. Furthermore, Broadcasting Interest Enterprise, Inc. reserves the right to state that all spoken information, written data or electronic transmitted knowledge in text form is secret and only intended for the recipient or group addressed. If you are not the party authorized to receive this information it is immediately advised that you cease and assist. Options: (1) Destroy, delete and dismember all copies. (2) Return all copies of this document to Broadcasting Interest Enterprise, Inc. All information in this document is considered intellectual property of Broadcasting Interest Enterprise, Inc and is not authorize for public usage.



WWW.BIEMEDIAGROUP.COM
(404) 348 - 8319



April, 2010

Broadcasting Interest Enterprise, Inc.

Advertisement & Sponsorships of 'Social Networking with C. Henry Adams & The Krewe'

Type of Sponsor	Cost per Show (Itemized)		Cost per Week	Cost per Month	Total Annual Cost
	Tuesday	Thursday			
Show Sponsor	\$1687.50 USD	\$1687.50 USD	\$3,375 USD	\$13,500 USD	\$162,000 USD
Segment Sponsor * (4) Segments per 1 hour show	\$31.25 USD per segment	\$31.25 USD per segment	\$125.00 USD per 1 hour Show	\$1000 USD per (8) 1 hour Shows	\$13,000 USD per (104) 1 hour Shows
Internet Sponsor * Banners display for (1) week per show	\$125.00 USD per 2 Banners	\$125.00 USD per 2 Banners	\$250.00 USD per 4 Banners	\$1000 per 16 Postings	\$12,000 USD
Radio Commercial Sponsor :15	\$31.25 USD	\$31.25 USD	\$500.00 per 16	\$2000 per 64	\$24,000 USD
Radio Commercial Sponsor :30	\$62.50 USD	\$62.50 USD	\$1000.00 per 16	\$4000 per 64	\$48,000 USD
Radio Commercial Sponsor :60	\$123.50 USD	\$123.50 USD	\$998.00 per 8	\$3992 per 32	\$47,904 USD

Figure 2

Show Sponsor – The organization sponsoring the entire broadcast, rates are estimated at \$1,687.50 per show or \$162,000.00 USD per annual.

Segment Sponsor – The organization sponsoring the (4) four segments of the show per hour. An example of a segment might be when the show breaks for a commercial a quarter after the hour then starts a new discussion, interview or topic. Ex. The Announcer states, “The Interview with the CEO segment was brought to you by ABC Company. ABC Company is the best technology company, call 1800123ABCD or visit them on the web at”

Internet Sponsor – The organization sponsoring the Internet will have displayed banners with backlinks to their respective web sites on the Talk Radio Show Discussion Website for 1 week. All banners will vary, but the cost or rate will remain constant.

Radio Commercial Sponsor or Radio Ads – the rate will vary per cost of a 15-sec., 30-sec. or 60-sec. Radio Ad.

Confidentiality Disclosure: Treasury Department Circular 230 Disclosure: To ensure compliance with requirements imposed by the Treasury Department, we inform you that any U.S. federal tax advice contained in this communication (including any attachments) is not intended or written to be used, and cannot be used, for the purpose of (i) avoiding penalties under the Internal Revenue Code or (ii) promoting, marketing or recommending to another party any transaction or matter addressed herein. Furthermore, Broadcasting Interest Enterprise, Inc. reserves the right to state that all spoken information, written data or electronic transmitted knowledge in text form is secret and only intended for the recipient or group addressed. If you are not the party authorized to receive this information it is immediately advised that you cease and assist. Options: (1) Destroy, delete and dismember all copies. (2) Return all copies of this document to Broadcasting Interest Enterprise, Inc. All information in this document is considered intellectual property of Broadcasting Interest Enterprise, Inc and is not authorize for public usage.



WWW.BIEMEDIAGROUP.COM
(404) 348 - 8319



Broadcasting Interest Enterprise, Inc.

April, 2010

**Broadcasting Interest Enterprise, Inc. presents
The Program Summary of 'Social Networking with C. Henry Adams & The Krewe'**

Contact Information

Physical Mailing Address: Broadcasting Interest Enterprise, Inc.
Corporate Headquarters Mailstop
Attn. BIE Media Group
PO Box 757
Lithia Springs, Georgia 30122-0757 USA

Telephone: **(404) 348 – 8319** < You may call or text us, please
leave a voicemail message if no one answer immediately.>

Web site: <http://www.biemediagroup.com>

Confidentiality Disclosure: Treasury Department Circular 230 Disclosure: To ensure compliance with requirements imposed by the Treasury Department, we inform you that any U.S. federal tax advice contained in this communication (including any attachments) is not intended or written to be used, and cannot be used, for the purpose of (i) avoiding penalties under the Internal Revenue Code or (ii) promoting, marketing or recommending to another party any transaction or matter addressed herein. Furthermore, Broadcasting Interest Enterprise, Inc. reserves the right to state that all spoken information, written data or electronic transmitted knowledge in text form is secret and only intended for the recipient or group addressed. If you are not the party authorized to receive this information it is immediately advised that you cease and assist. Options: (1) Destroy, delete and dismember all copies. (2) Return all copies of this document to Broadcasting Interest Enterprise, Inc. All information in this document is considered intellectual property of Broadcasting Interest Enterprise, Inc and is not authorize for public usage.



2001 North 3rd Street
Suite 102
Phoenix, AZ 85004

Phone: (602) 277-1100
Fax: (602) 248-1478
www.1100kfnx.com

April 2010

Dear Prospective Advertiser,

'Social Networking with C. Henry Adams & the Krewe' Talk Radio Show was copyright, produced and distributed by Broadcasting Interest Enterprise, Inc. in association with KFNX 'NEWS-TALK RADIO' 1100 AM of Phoenix, Arizona. This Talk Radio Show is an emerging syndicated broadcast of Broadcasting Interest Enterprise, Inc. featuring its President & CEO – C. Henry Adams. The Show will discuss business development, advancements in Information Technology and Telecommunications as they relate to Social Media.

In 1998, C. Henry Adams founded Broadcasting Interest Enterprise, Inc. ("BIE") - a business development and telecommunications consulting firm. C. Henry Adams is a professional whose vernacular is not short of Southern American Dialect, but his unique often amusing approach to providing an explanation regarding the workings of various technologies is very educational. He is a brilliant rarity to say the least.

Radio advertising on KFNX 'NEWS-TALK RADIO' 1100, is one of the most **affordable** and **cost effective** ways (3 times more cost effective than music stations) to do so. Radio reaches 93% of all adults each week – or - 260 million people listen to the radio each week. The average person spends 1,000 hours per year listening to the radio, second only to television at 1,500 hours. KFNX reaches your potential customers; upscale listeners who are older, more educated and more affluent. KFNX listeners hear more ads because of their loyalty to our talk hosts, greater time spent listening, and ads being less of an interruption. KFNX works with you personally and monitors your response and will adjust the schedule accordingly to maximize your return on investment.

KFNX was voted one of the Top Ten Radio Stations in Arizona by Ranking Arizona and has over 89,000 weekly listeners. KFNX has one of the largest signals of any Phoenix Radio Station with 50,000 watts reaching almost 5 million people throughout Arizona from Sedona to Tucson and Yuma to Globe. KFNX has the best dial position at 1100 in the middle of the A.M. dial. KFNX's featured shows include - '**Imus In The Morning**' mornings 3–6 a.m., '**The Laura Ingraham Show**' mornings 6-9 am, '**The Neal Boortz Show**' mid-mornings 10 a.m.-12 noon, '**The Dr. Laura Program**' mid-days 1-3 p.m., '**The Lou Dobbs Show**' afternoons 5-7 p.m.. KFNX is the Phoenix radio broadcast home of the **University of Arizona Men's Football and Basketball** games. KFNX has a wide variety of informative and entertaining programming from politics to business to health. KFNX offers CNN national news as well as local news, weather and traffic around the clock. You can listen to **KFNX at 1100** on your AM dial, or go to our website { **HYPERLINK "http://www.1100kfnx.com"** } to listen worldwide and for more information on the station.

I look forward to hearing from you.

Francis Battaglia
President
KFNX 1100 AM
602 277-1100 x 1463
fbattaglia@1100kfnx.com